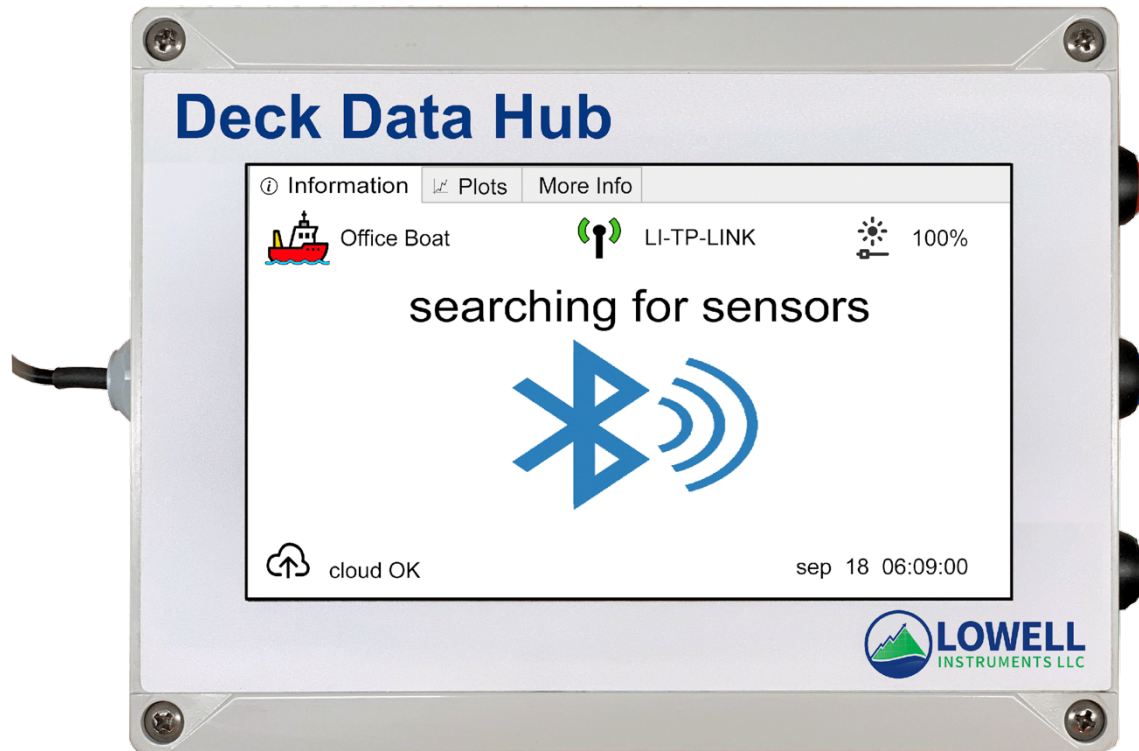


## Product Data Sheet



# On Deck Data System - Deck Data Hub

Bluetooth – Wi-Fi – 4G Cellular

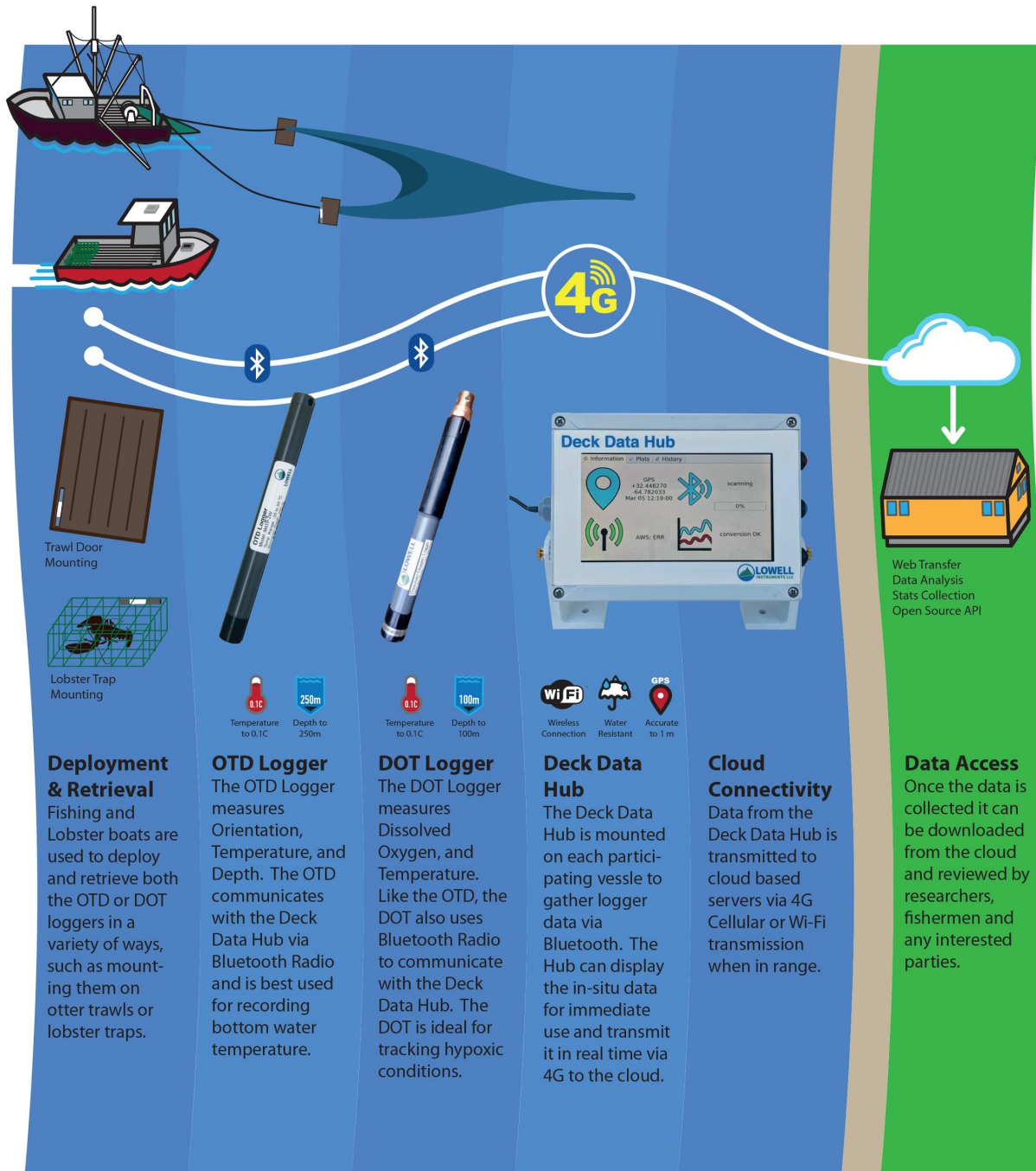


**Description:** The Deck Data Hub is a wireless IoT gateway with a touch screen user interface. The Deck Data Hub is intended for use by commercial fishing boats to aggregate data from IoT sensors and devices. The display provides access to real-time and historical data. The 4G cellular module provides fast, low-cost internet connectivity for remote transmission of averaged data. The modular nature of the system ensures that the system can be upgraded as technology and requirements change with time.

## Specifications

### Deck Box

Wireless Transmission Range	Bluetooth 5.0 (BLE) - Approximately 30.5 m (100 ft) line-of-sight
Connectivity Cellular	LTE, UMTS/HSPA+ and GSM/GPRS/EDGE
Connectivity Wi-Fi	Wi-Fi WLAN IEEE 802.11 b/g/n 2.4GHz
Display	7" color touchscreen, resolution 800 x 480
Operating Temperature	0° C (32° F) to +50° C (+122° F)
Power Source	12-27V DC, 3 A Max or 120 V AC (configurable)
Environmental Rating	NEMA 4X, IP68 (splash resistant)



#### More Information:

Lowell Instruments, LLC, 82 Technology Park Drive, East Falmouth MA 02536

Phone: 508-444-2616

Email: [info@lowellinstruments.com](mailto:info@lowellinstruments.com)

[www.lowellinstruments.com](http://www.lowellinstruments.com)